

SOAP DISPENSER

MODEL:  
AOTA - SD



PART NUMBERS:

AOTA-SD-001-DAN001-1000-SS-C-AC  
Chrome Finish AC Power Supply

AOTA-SD-001-DAN001-1000-SS-C-DC  
Chrome Finish DC Power Supply

MECHANICAL DATA:	
Width:	1 3/4" (40mm)
Depth:	7 7/8" (200mm)
Height:	1 3/4" (40mm)
COMPOSITION:	
304 Stainless Steel	
INSTALLATION:	
Includes Stainless Steel Screws to install	

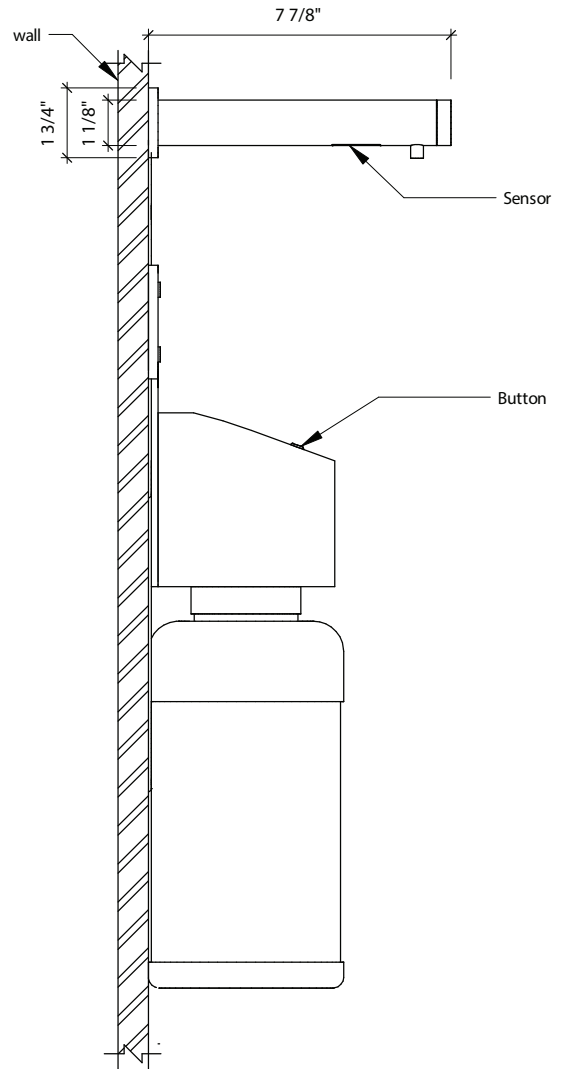
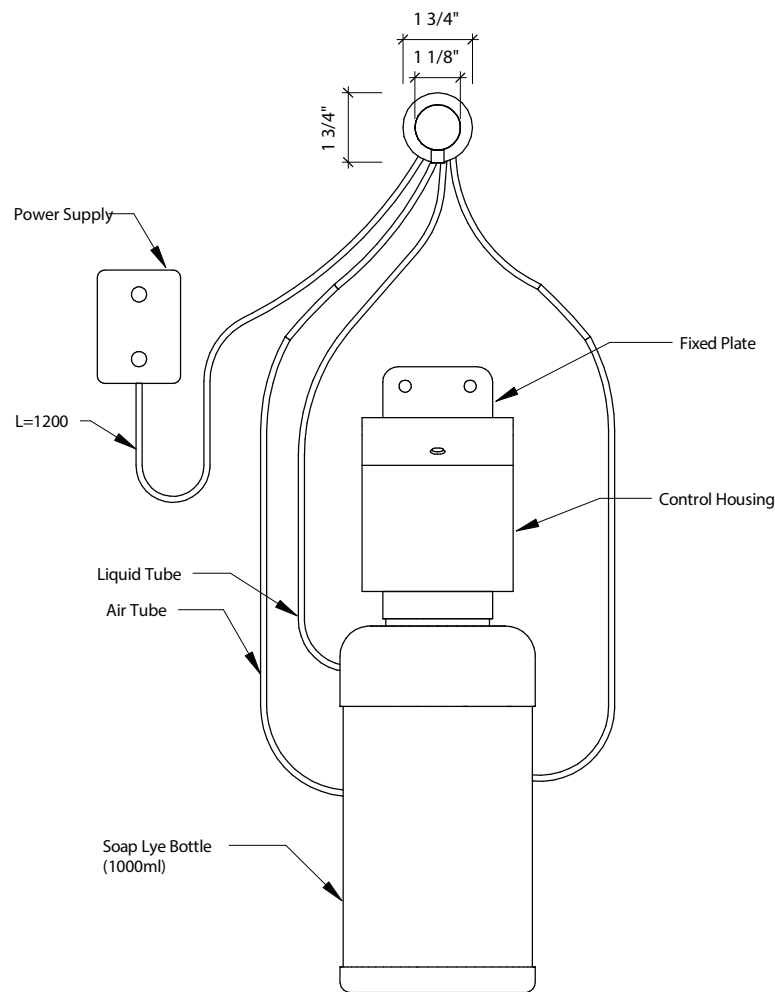
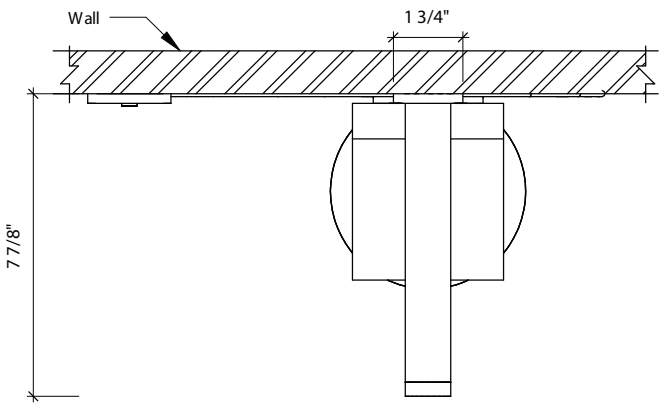
FEATURES:

- Comes with an attached soap bottle with capacity 34 fl oz (1.0l)
- The dispenser is designed to dispense commercially marketed all purpose liquid hand soaps that are not alcohol based
- Included parts - Spout, Controller, spare tool kit, Battery Case/AC adapter
- Standard parameter:
  - Length of soap tube and air tube both are: 1100mm
  - Length of sensor cable is: 1350mm
  - Length of power cable is: 1500mm

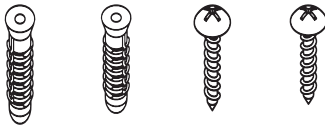
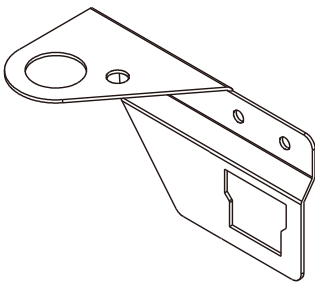
NOTES:

- Please keep enough space for refilling soap or replacing soap bottle
- Please make sure that the length of soap tube, air tube and sensor cable are sufficient to connect with host/control box of the dispenser in the installation
- If the length of soap tube or air tube is too long, they can be cut for suitable length

**SOAP DISPENSER**

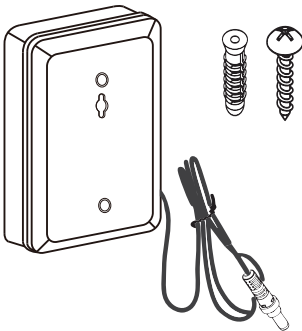


**| SOAP DISPENSER**



**OPTIONS FOR SPARE PARTS OF POWER SUPPLY:**

Battery Case (DC)



AC Adapter (AC)

