

SOAP DISPENSER

MODEL:
AOTA - SD

PART NUMBERS:

AOTA-SD-001-DAM001-1000-SS-C-AC
Chrome Finish AC Power Supply

AOTA-SD-001-DAM001-1000-SS-C-DC
Chrome Finish DC Power Supply



MECHANICAL DATA:	
Width:	2 3/8" (60mm)
Depth:	7 1/4" (184mm)
Height:	3" (76mm)
COMPOSITION:	
304 Stainless Steel	
INSTALLATION:	
Includes Stainless Steel Screws to install	

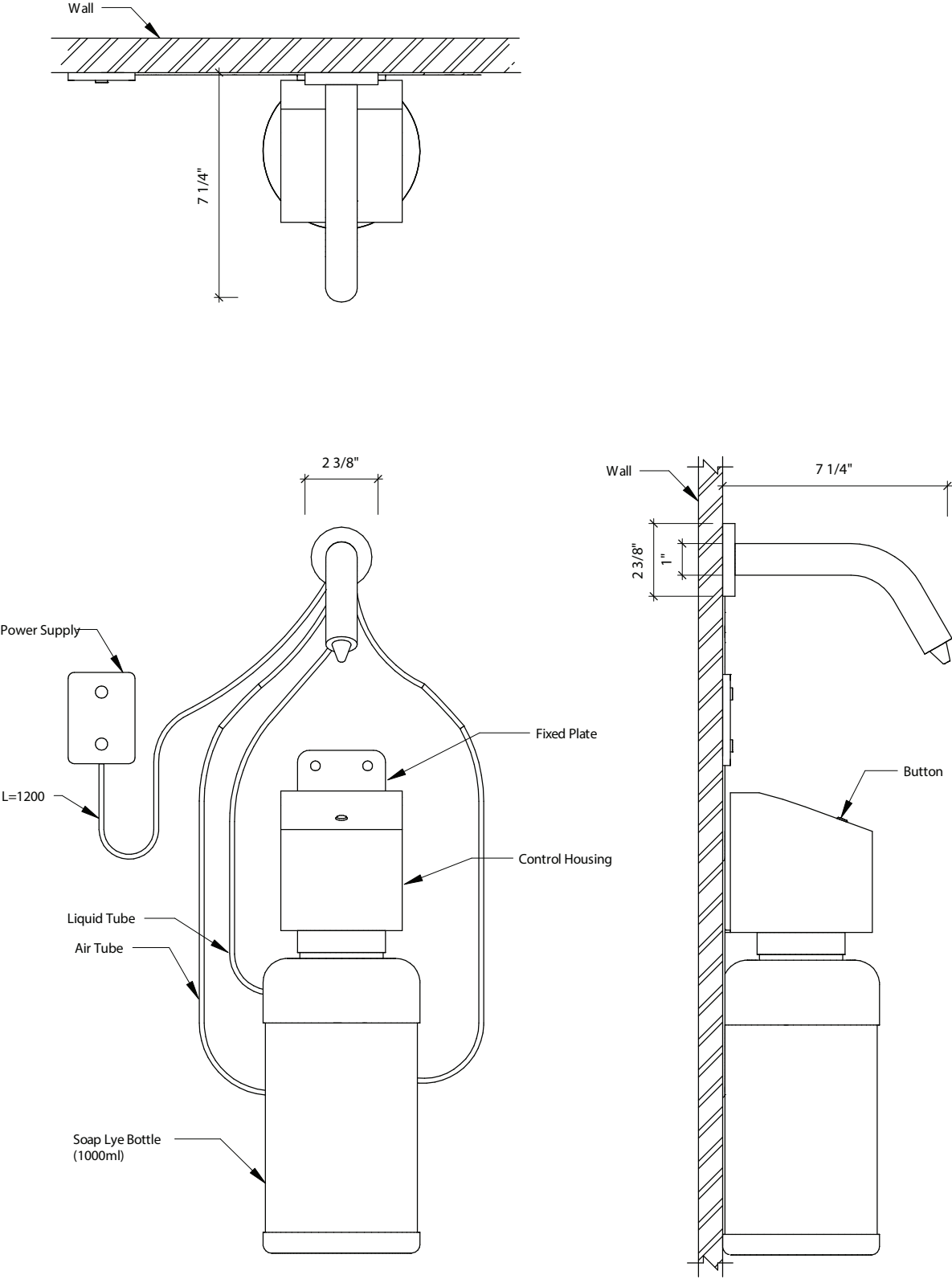
FEATURES:

- Comes with an attached soap bottle with capacity 34 fl oz (1.0l)
- The dispenser is designed to dispense commercially marketed all purpose liquid hand soaps that are not alcohol based
- Included parts - Spout, Controller, spare tool kit, Battery Case/AC adapter
- Standard parameter:
 - Length of soap tube and air tube both are: 1100mm
 - Length of sensor cable is: 1350mm
 - Length of power cable is: 1500mm

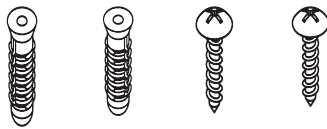
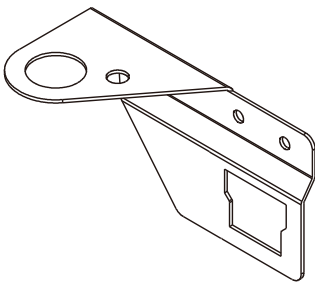
NOTES:

- Please keep enough space for refilling soap or replacing soap bottle
- Please make sure that the length of soap tube, air tube and sensor cable are sufficient to connect with host/control box of the dispenser in the installation
- If the length of soap tube or air tube is too long, they can be cut for suitable length

SOAP DISPENSER

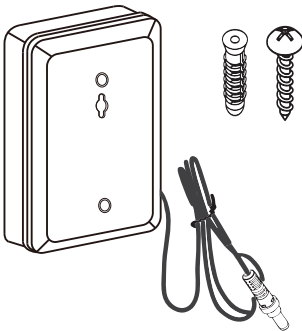


| SOAP DISPENSER



OPTIONS FOR SPARE PARTS OF POWER SUPPLY:

Battery Case (DC)



AC Adapter (AC)

