

SOAP DISPENSER

MODEL:  
AOTA - SD

PART NUMBERS:

AOTA-SD-001-DAL001-1000-SS-C-AC  
Chrome Finish AC Power Supply

AOTA-SD-001-DAL001-1000-SS-C-DC  
Chrome Finish DC Power Supply



| MECHANICAL DATA:                           |                |
|--|----------------|
| Width:                                     | 1 3/4" (44mm)  |
| Depth:                                     | 5 3/4" (146mm) |
| Height:                                    | 5 3/8" (136mm) |
| COMPOSITION:                               |                |
| 304 Stainless Steel                        |                |
| INSTALLATION:                              |                |
| Includes Stainless Steel Screws to install |                |

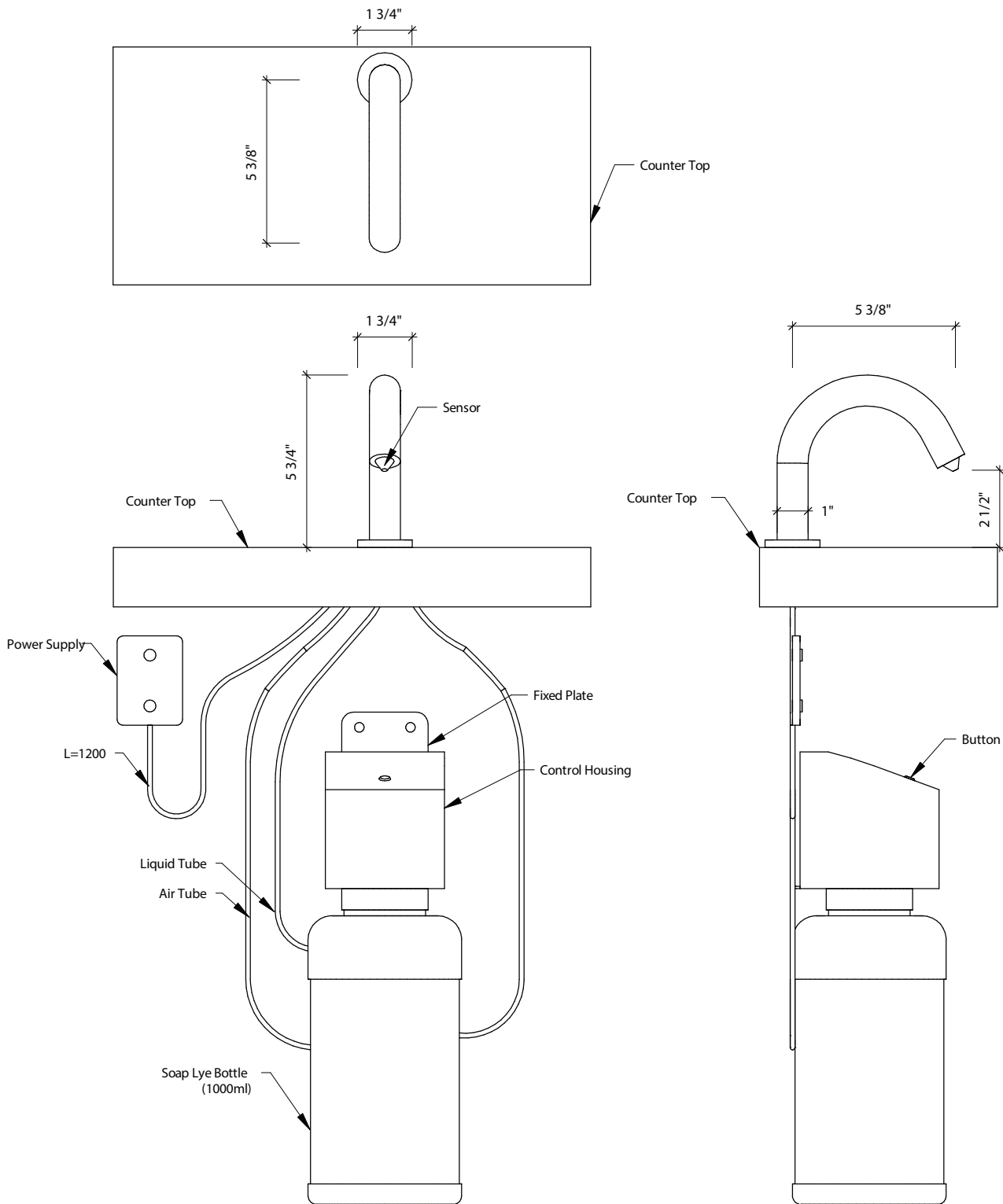
FEATURES:

- Comes with an attached soap bottle with capacity 34 fl oz (1.0l)
- The dispenser is designed to dispense commercially marketed all purpose liquid hand soaps that are not alcohol based
- Included parts - Spout, Controller, spare tool kit, Battery Case/AC adapter
- Standard parameter:
  - Length of soap tube and air tube both are: 1100mm
  - Length of sensor cable is: 1350mm
  - Length of power cable is: 1500mm

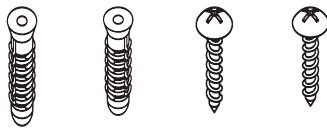
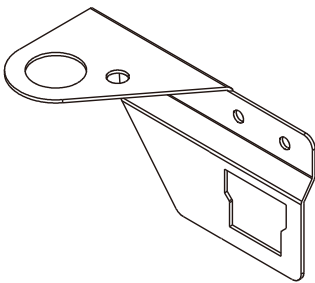
NOTES:

- Please ensure that distance between soap spout and water faucet is not less than 120mm to avoid accidental activation
- Please make sure the distance between mounted hole of spout and counter edge is not more than 80mm so that the soap can be dispensed in right place inside of water sink/counter
- Please keep enough space for refilling soap or replacing soap bottle
- Please make sure that the length of soap tube, air tube and sensor cable are sufficient to connect with host/control box of the dispenser in the installation
- If the length of soap tube or air tube is too long, they can be cut for suitable length

**| SOAP DISPENSER**

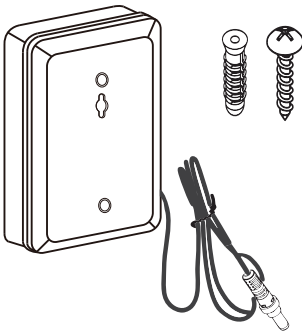


**| SOAP DISPENSER**



**OPTIONS FOR SPARE PARTS OF POWER SUPPLY:**

Battery Case (DC)



AC Adapter (AC)

