

AREA LIGHT SLIM LED PARKING LOT LIGHT



Project:

Location:

Cat No:

Type:

Qty:

Notes:

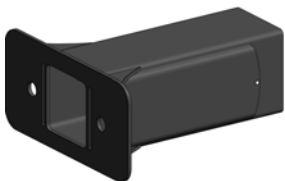
About:

Light that provides a sense of safety with superior luminaires for all the general lighting applications.

SKU: AOLF-SI-016-AAC001

LUMENS	CCT	CRI	OPTION	FINISH
<input type="text"/>	<input type="text"/>	<input type="text" value="70"/>	<input type="text"/>	<input type="text"/>
39-3900 (30W)	50-5000K	≥70 CRI	Blank-None	BL - Black
65-6500 (50W)			PC-Photocell	WH-White
97-9750 (75W)			MO-Motion sensor	BZ- Dark Bronze
130-13000 (100W)				
195-19500 (150W)				
260-26000 (200W)				
390 -39000 (300W)				

Mounting Bracket Options:



Type A
Square pole/wall mount



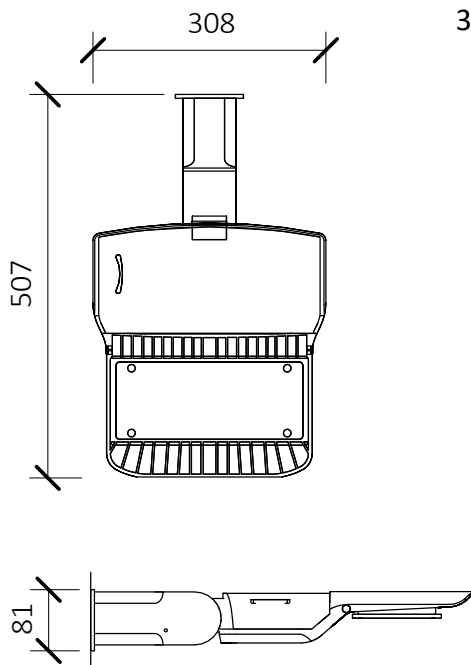
Type B
Round pole



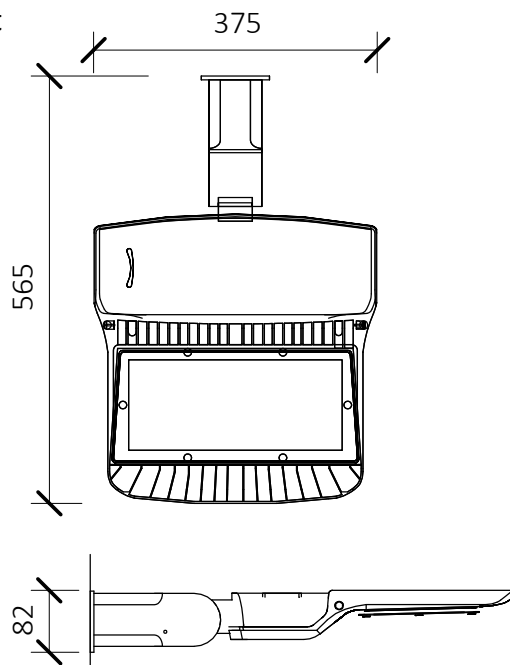
Type C
Wall mount

AREA LIGHT SLIM LED PARKING LOT LIGHT

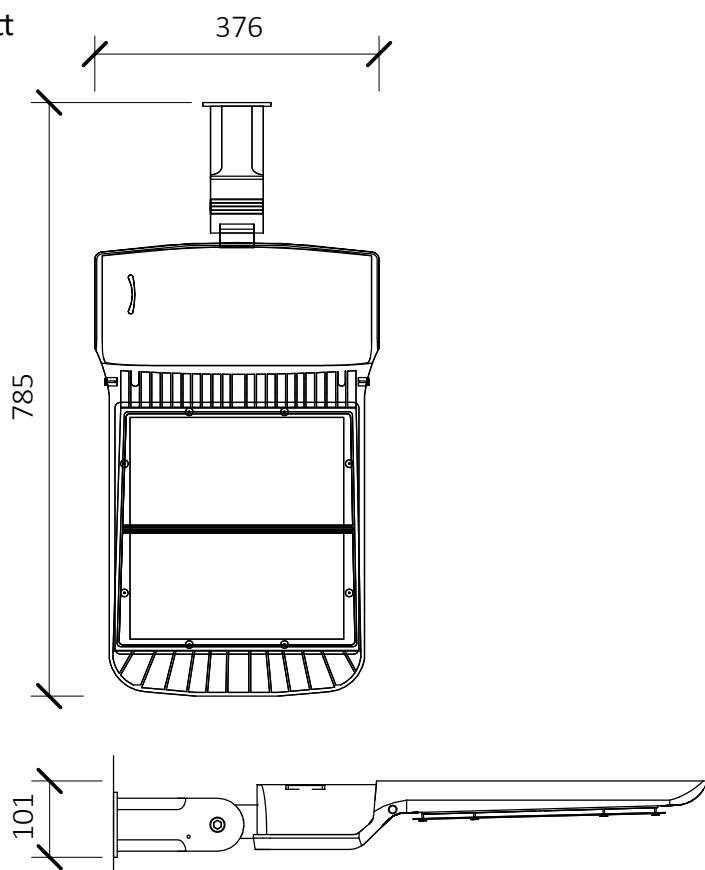
30, 50, 75 Watt



30, 50, 75 Watt



200, 300 Watt



AREA LIGHT

SLIM LED PARKING LOT LIGHT

FEATURES:

- Module lens design, suitable for lighting distribution of parking area light.
- Hollow out style heat sink for lighter weight and better heat dissipation.
- Fixed installation angle or adjustable installation angle with adjustment range of -90° to +90°.
- Better performing and energy efficient Philips LED chips.
- IP65 rated water resistance.
- Comes with multiple mounting brackets and beam angles.

APPLICATION:

- Parking lots, plazas, shopping malls, gardens, roadways, site & areas, and general lighting applications.

WARRANTY:

- 5 Years

TECHNICAL CHARACTERSTICS:

Input Power	30W, 50W, 75W, 100W, 150W, 200W, 300W
Viewing Angle	90°x120°
Input Voltage	120V to 277V AC; 50/60Hz
Driver Model	Meanwell HLG Series/Sosen
Waterproof Rating	IP65
Preferred Pole Length	10' to 46'

MATERIAL:

Operating Temperature	-40°F to 122°F
Operating Humidity	20% to 90% RH
Storage Temperature	-40°F to 158°F
Storage Humidity	20% to 90% RH
Application	Outdoor
Safety Certification	ETL, cETL, DLC